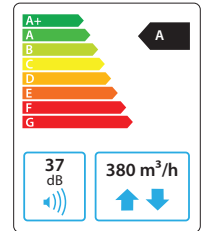


Domekt R 400 V C6M

Maximal air flow, m ³ /h	380
Maximal air flow, l/s	106
Reference flow rate, m ³ /s	0,074
Reference pressure difference, Pa	50
SPI, W/(m ³ /h)	0,3
Thermal efficiency of heat recovery, %	85
Electric air heater capacity, kW / Δt, °C	1/11
Supply voltage, V	1~230
Maximal operating current HE, A	6,5
Electric power input of the fan drive at maximum flow rate, W	115
Electric power input of the fan drive at reference flow rate, W	42
Filters dimensions BxHxL, mm	428x231x46
Unit dimensions BxHxL, mm	495x561x598
Maintenance space, mm	600
Unit weight, kg	49



Acoustic data

A-weighted sound power level $L_{W,a}$ dB(A) at reference flow rate

Supply inlet	55
Supply outlet	68
Exhaust inlet	54
Exhaust outlet	67
Casing	37

A-weighted sound pressure level $L_{p,a}$ dB(A)

10 m² normally isolated room, distance from casing – 3 m.

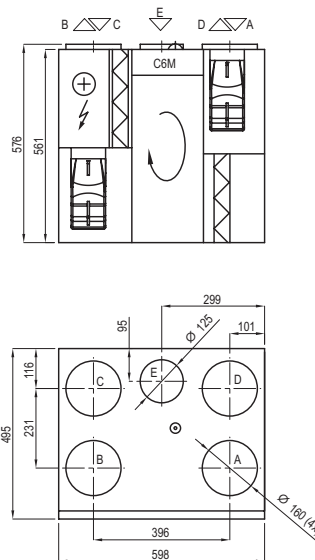
Surroundings	27
--------------	----

Temperature efficiency

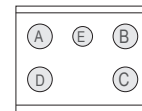
Outdoor temperature, °C	Winter					Summer		
	-23	-15	-10	-5	0	25	30	35
After heat exchanger, °C	15,3	16,5	17,2	18	18,7	22,5	23,2	24

indoor +22°C, 20 % RH

Shown as left (L1)



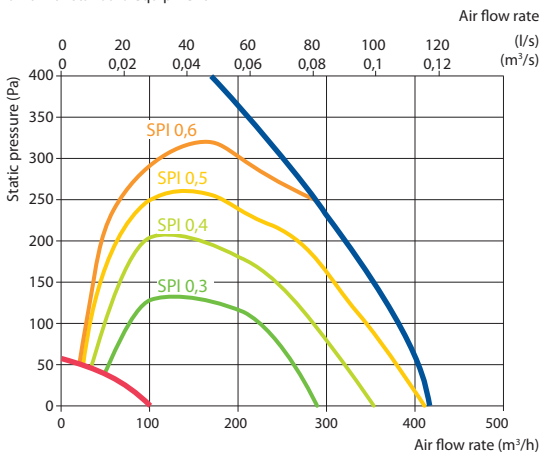
Shown as right (R1)



- A outdoor intake
- B supply air
- C extract indoor
- D exhaust air
- E additional extraction connection (by-pass – extraction without heat recovery)

Performance

Unit with standard equipment



Accessories

Closing damper	AGUJ-M-160+LF230/CM230
Silencer	A/D AGS-160-50-600-M
	B/C AGS-160-50-900-M
Water heater	DH-160
PPU	PPU-HW-3R-15-0,4-W2
2-way valve (heater)	VVP47.10-0,4

Water cooler	DCW-0,4-3
2-way valve (cooler)	VVP47.10-1,6
Outdoor grill	LD-160
Water heater-cooler	DHCW-160
DX heater-cooler	DCF-0,4-3
Heat pump unit	MOU-12HFN8+KA8140

