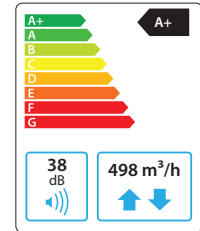


# Domekt R 450 V C6M

Maximal air flow, m <sup>3</sup> /h	498
Maximal air flow, l/s	138
Reference flow rate, m <sup>3</sup> /s	0,097
Reference pressure difference, Pa	50
SPI, W/(m <sup>3</sup> /h)	0,3
Thermal efficiency of heat recovery, %	86
Electric air heater capacity, kW / Δt, °C	1/8,4
Supply voltage, V	1~230
Maximal operating current HE, A	7,5
Electric power input of the fan drive at maximum flow rate, W	146
Electric power input of the fan drive at reference flow rate, W	54
Filters dimensions BxHxL, mm	517x278x46
Unit dimensions BxHxL, mm	585x655x680
Maintenance space, mm	700
Unit weight, kg	60



## Acoustic data

A-weighted sound power level  $L_{WA}$ , dB(A) at reference flow rate

Supply inlet	57
Supply outlet	66
Exhaust inlet	57
Exhaust outlet	66
Casing	38

A-weighted sound pressure level  $L_{pAR}$ , dB(A)

10 m<sup>2</sup> normally isolated room, distance from casing – 3 m.

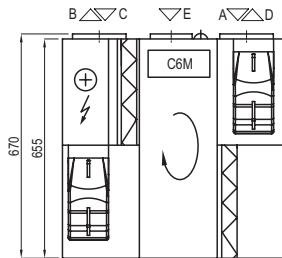
Surroundings	28
--------------	----

## Temperature efficiency

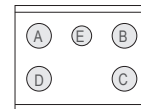
Outdoor temperature, °C	Winter					Summer		
	-23	-15	-10	-5	0	25	30	35
After heat exchanger, °C	15,7	16,8	17,5	18,2	18,9	22,4	23,1	23,8

indoor +22°C, 20 % RH

Shown as left (L1)



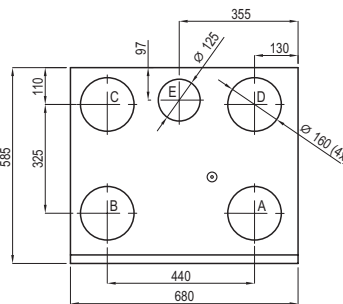
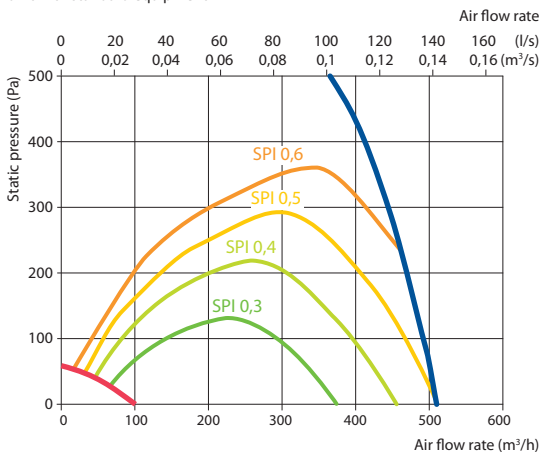
Shown as right (R1)



- A outdoor intake
- B supply air
- C extract indoor
- D exhaust air
- E additional extraction connection (by-pass – extraction without heat recovery)

## Performance

Unit with standard equipment



## Accessories

Closing damper	AGUJ-M-160+LF230/CM230
Silencer	A/D AGS-160-50-600-M B/C AGS-160-50-900-M
Water heater	DH-160
PPU	PPU-HW-3R-15-0,4-W2
2-way valve (heater)	VVP47.10-0,4

Water cooler	DCW-0,5-3
2-way valve (cooler)	VVP47.10-1,6
Outdoor grill	LD-160
Water heater-cooler	DHCW-160
DX heater-cooler	DCF-0,5-3
Heat pump unit	MOU-12HFN8+KA8140

C6.1



C6.2

